

Year 5 – Geography – Australia – Lesson 3

KO: **Canberra** is the Capital City of **Australia** and several major settlements are located along the **South East coast**.

Key Vocabulary:

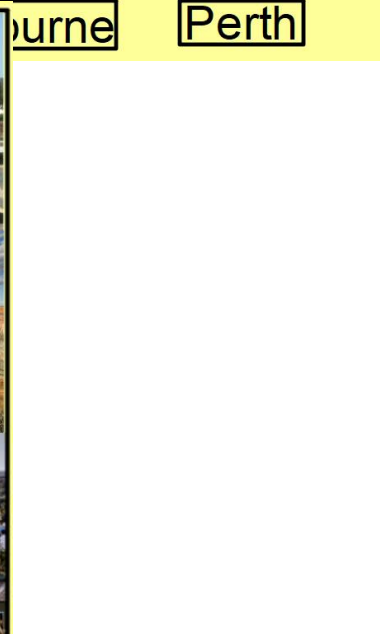
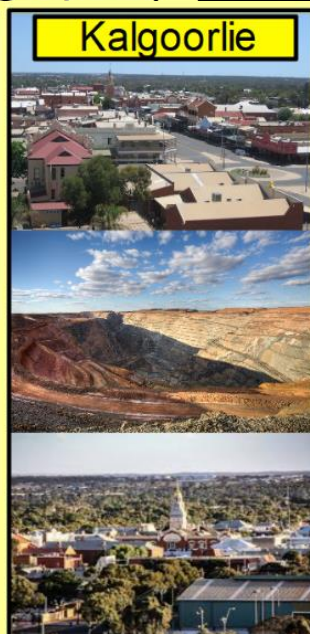
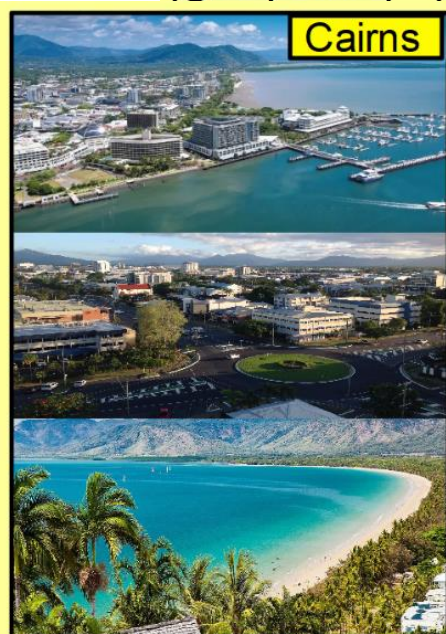
- Canberra
- Sydney
- Brisbane
- Melbourne
- Adelaide
- Perth
- Darwin
- Cairns
- Industry
- Mining
- Banking

Why do you think many major cities are located on the eastern coast of Australia?

Australia is divided into six states and two territories. Each state and territory has its own capital city and state government. Canberra, in the ACT, is the capital of Australia and is where the Federal Government sits.

Sydney, the capital city of NSW, is the largest city in Australia and is known for its Harbour Bridge and the Sydney Opera house. Melbourne, the capital city of Victoria, is the next largest city in Australia and is known for the Yarra River that is described as an upside down river due to its constant brown colour.

Brisbane is the capital city of Queensland; Adelaide is the capital city of SA and Perth is the capital city of WA. Darwin is the capital city of the NT. Cairns, Alice Springs and Kalgoorlie are some other large cities.



Tasmania is an island off the south coast of mainland Australia known for its areas of rugged wilderness, its capital is Hobart.

Year 5 – Geography – Australia – Lesson 3



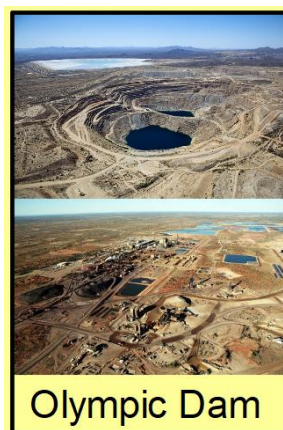
The boundaries between most states follow the lines of meridians and parallels. The border between New South Wales and Queensland is wiggly because it follows the lines between rivers, hills and mountains.

The cities of Adelaide, Melbourne, Sydney and Brisbane form an arc around the south-east coast of Australia. Canberra, the capital is south of Sydney and is around 90 miles inland. It was built so it sat equally between Sydney and Melbourne, which both wanted to be named the capital of Australia.

People do a wide variety of jobs in Australia.

Banking and finance is a hugely important industry, as is mining and farming.

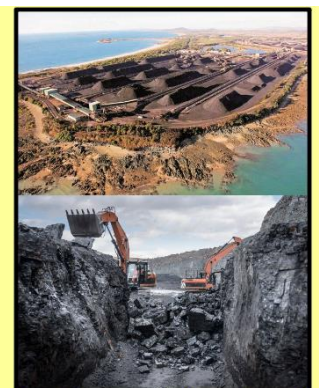
Mining is a major contributor to the Australian economy, particularly coal mining. Carmichael Coal Mine in Queensland is one of the largest coal mines in the world. Olympic Dam is a metal mine in South Australia and Super Pit is a gold mine in Western Australia.



Olympic Dam



Super Pit



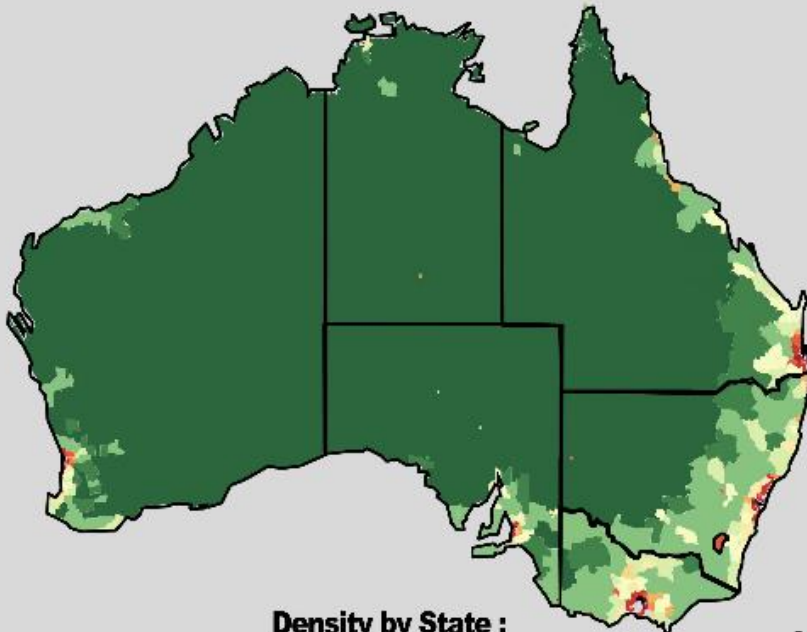
Carmichael Coal Mine

Year 5 – Geography – Australia – Lesson 3

Population Density in Australia.



Number of people per square kilometre.	Number of people per square mile.
2000+	5180+
1000 - 2000	2590 - 5980
500 - 1000	1295 - 2590
200 - 500	518 - 1295
100 - 200	259 - 518
75 - 100	194 - 259
50 - 75	130 - 194
35 - 50	91 - 130
20 - 35	52 - 91
10 - 20	26 - 52
5 - 10	13 - 26
1 - 5	2.6 - 13
0.5 - 1	1.3 - 2.6
< 0.5	< 1.3



Density by State :



National Average:



 @mapsbynick
 @MapsByNick
© Nicholas Brill. 2020

Task: Why are there no major cities in the Outback? What industries are there in Australia?

Step for depth:

Using any examples you know, explain why cities grow in particular areas.