

Date: _____

KO: New Zealand's climate means it is home to a wide range of plants and animals.

Prior Learning Task

Define the words climate and biome.

Remember: A biome is a community of plants and animals that have shared characteristics due to the environment they live in.

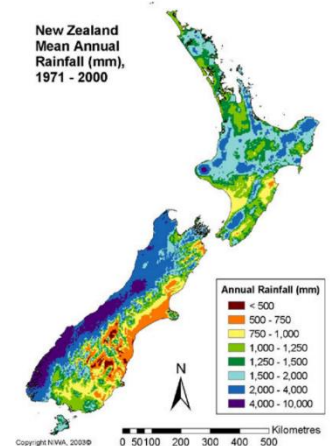
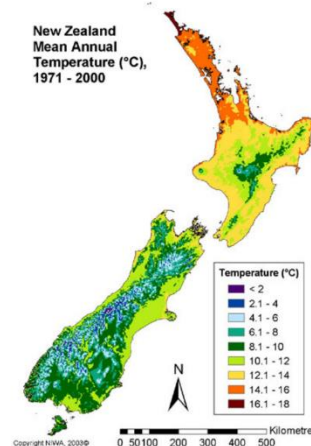
New Zealand's location and size means it has a slightly different climate to Australia.

Key Vocabulary

- Biome
- Climate
- Temperate
- Grassland
- Deciduous
- Kiwi Bird
- Stoat

The North Island can experience high temperatures in the summer.

The South Island can experience very low temperatures in the winter.



New Zealand's main biomes are grassland and mixed forest, including temperate broadleaf and deciduous.

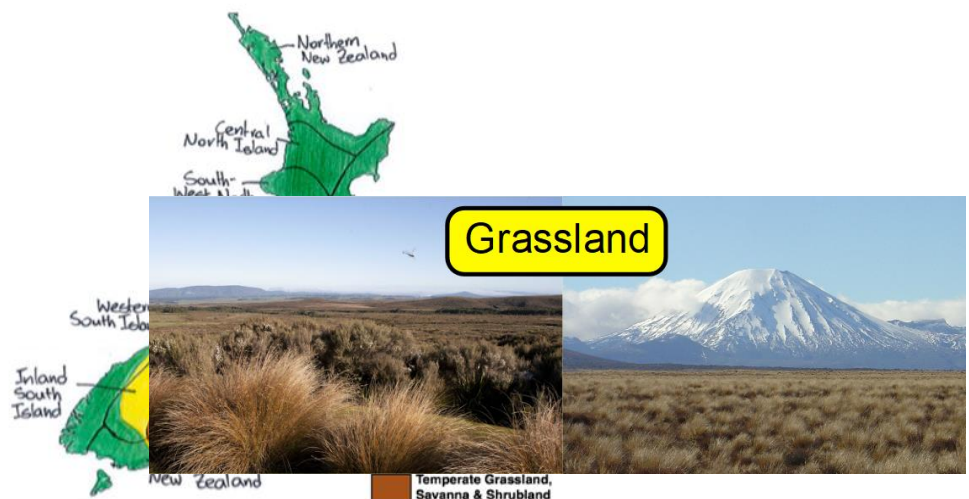


Figure 3: New Zealand Biomes and Climate Group Locations (Adapted from New Zealand Climate Report 2007 & Singers & Rogers 2014)

Date: _____

KO: New Zealand's climate means it is home to a wide range of plants and animals.

Mixed forest, including temperate broadleaf and deciduous. The temperate climate, with lots of precipitation and sunshine, means New Zealand is home to a wide range of exotic plants and animals.



The kiwi bird is a nocturnal, flightless bird, native to New Zealand. It is an icon of New Zealand, and people often refer to New Zealanders as 'kiwis.'

Kiwi birds eat worms or bugs and lay their eggs on the ground. They have hairlike feathers, short legs and have nostrils at the end of their long beaks allowing them to smell prey before they see it.



Stoats are not native to New Zealand and were introduced to control rabbit populations. They scavenge for meat, eating dead animals or birds' eggs and are now a danger to bird populations. Stoats use their long sharp incisors to break open eggs and then eat the contents, kiwi bird eggs are ideal for stoats to eat.

Stoats are an invasive animal species, what other animal have you learnt about that was invasive?

New Zealand is home to dolphins, whales, seals, and penguins. Dolphins and whales can be seen off the coast of New Zealand, particularly during migration.

Yellow eyed penguins are one of six species of penguins found in New Zealand.

New Zealand is also home to mountain goats and buffalo.



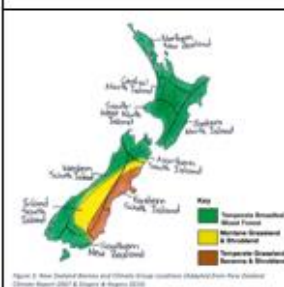
KO: New Zealand's climate means it is home to a wide range of plants and animals.



buffalo



A world map illustrating the distribution of major climate zones. The legend on the left identifies the zones by color: tropical (blue), temperate (green), continental (dark blue), polar (grey), hot arid (red), and cold arid (yellow). The map shows that tropical zones are concentrated in the equatorial regions, while polar zones are found in the high northern latitudes. Hot arid zones are prominent in North Africa, the Middle East, and Australia. Continental zones cover large areas of North America, Europe, and Asia.



Date: _____

KO: New Zealand's climate means it is home to a wide range of plants and animals.

Step for depth:

Stoats were introduced to New Zealand to kill rabbits. What are the reasons for and against introducing non-native species to an area? Use other examples you know in your answer.